

## LineUP Exactech Vantage® Protocol Guide

Pre-plan tibia and talar resections with the Vantage® Ankle PSI cutting guides, now available for use with CurveBeam AI's LineUP Weight Bearing CT imaging system. Please follow the steps below to use LineUP with the Vantage Ankle PSI.

### Preparation

- Patient should be in shorts for scan.
- No socks or any jewelry - ex: no ankle chains, toe rings, magnets, socks with copper fiber, etc.
- We recommend the patient not step barefoot on the patient platform; proper foot protection should be provided.
- All scans for Exactech Vantage® are weight bearing. Patients must be able to stand still for approximately 5 minutes for the entire patient exam.

### Procedure Selection & Patient Positioning

- All scans are LFOV (bilateral) with Knee-Gap-Foot type procedure.
- On the patient tab, select the "CT\_EXACTECH\_VANTAGE\_ANKLE\_L" or "CT\_EXACTECH\_VANTAGE\_ANKLE\_R" procedure. L or R indicates surgical side for procedure.
- On the protocol tab, select Large Field Standard.
- LFOV positioning:

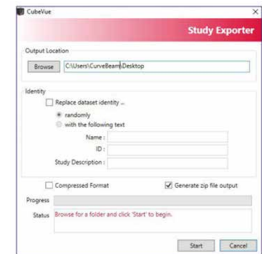


### Scan Requirements & DICOM Output

- A minimum of 5cm above and 5cm below the knee joint line and 10cm proximally from the tibia plafond (top of talar dome) is required.
- Scans with patient movement will need to be repeated.
- DICOM Output:
  - Send axial stack only of SV (Super Volume)
  - Images should be 0.5mm - 0.9mm slice thickness and 0 slice spacing.
  - Use VOI tool in DICOM Volume Creation to create reformat. Yellow rectangle should include knee, ankle, and foot of surgical side in one yellow box.

### DICOM Export/Sending

- Locate the reformat with "AX - SV" at the start of the series description on the patient list tab in CubeVue.
- Right click on the file and select DICOM export, and the Study Exporter window will open:
  - Do NOT edit identity. This will eliminate patient information needed by Exactech/3D Systems.
  - Deselect the box for "Compressed Format".
  - Select the box for "Generate zip file output".
- Export to a temporary location then send via the option below:
  - Upload to 3D Systems through the secure, upload portal: <https://medicaluploader.3dsystems.com/upload/vantage/psi>



### Contact for Assistance

CurveBeam AI Clinical Applications

Phone: 267 483 8081, Option 1 - (USA)  
Email: [ClinicalApps@curvebeamai.com](mailto:ClinicalApps@curvebeamai.com)